

COLORADO SECTION NEWS – OCTOBER 2017



Health and Safety Minute

The time of year has come for the end of daylight savings. During this time, there is an increased risk of accidents due to the change in ambient light during the beginning of the work shift.

Safety Tips for Daylight Saving Ending:

- Increase awareness of the potential for accidents after the time change.
- Wear high visibility or reflective clothing in high traffic areas.
- Regularly clean the windows and mirrors on mobile equipment.
- Have multiple pairs of safety glasses with different tints to change with the ambient light conditions.

Section Chair Report

I would like to thank everyone who participated or contributed to our annual golf tournament. We had a wonderful turn out! All of our golf tournament sponsors' logos are provided later in the newsletter. These contributions have helped to secure scholarship funds for seven students focused on Mining Engineering, Metallurgy, and Mining Geology. We have also provided photos and bios of the students we have chosen to award our golf funds to later in the newsletter. These students are the future of the mining industry. Supporting them supports our industry, and SME Colorado Chapter is proud to do so. If you have not participated in this event in the past, I highly suggest you consider it next year. The golf tournament goes to a wonderful cause and is a great way to meet and greet with others in our industry.

I am very excited about our SME Section meetings this year. Our next meeting, on November 18th, will be held in conjunction with the Colorado Student Section at the Colorado School of Mines! We will be posting all of our meeting dates on the website calendar with links to sign up (please bear with us as this is a current work in progress). We hope you can all join us, as we have lined up many interesting speakers for the coming months. If you would like to use our venue to market, we are looking for bar sponsors to host SME Chapter dinners. If you are interested, please feel free to reach out to me or any of the other board members for details.

As Chair of our SME Chapter, I am here to serve our members. If you have any criticisms or feedback, please do not hesitate to reach out. You can email me at rschwering@hardrock-consulting.com. Thank you again for allowing me to serve in this role. Enjoy the fall weather, and I hope to see you at our November meeting!

Richard A. Schwering

November Joint CSM Student and Colorado SME Chapter Meeting

Please join us for a combined meeting of the Colorado SME Section and the Colorado School of Mines (CSM) Student SME Chapter on Thursday, November 18, 2018 from 5:30 PM to 7:30 PM

Colorado School of Mines
 Berthoud Hall Room 243
 Golden, CO 80401

Walter Weinig will be discussing Lithium Markets & Mining – It's Not Just the Metal

Tickets are \$25 for non-students; \$10 for students. Non-students: Please purchase tickets through this Eventbrite page. Students: Please RSVP to Sarah Doyle (sdoyle@mines.edu) and pay cash at the door. Tickets include dinner and beverages (beer, wine, and non-alcoholic options). Register using the Eventbrite page:

https://www.eventbrite.com/e/sme-csm-student-chapter-co-section-meeting-tickets-51089035681?ref=enivte001&invite=MTUzMTC2OTqva2RvbmFodWU1M0Bob3RtYWlsLmNvbS8x%0A&utm_source=

2018 Golf Tournament Wrap-Up

THANK YOU again to all of the sponsors listed below and to all of our players for making the 2018 Golf Tournament a huge success! Special thanks to **NEWMONT** for coming through as our Gold Sponsor yet again this year. Despite the cold temps that day, we raised the money that we needed to fund our scholarship program for Colorado School of Mines undergraduate and graduate students in mining-related fields of study. I welcome your feedback on the event and your suggestions of how to make it even bigger and better next year!

–Laura Fletcher (laurafletcher435@gmail.com)

Photos of the event are available to download for free here: <http://community.smenet.org/colorado/events/photos>



HARRISON WESTERN

RPMGLOBAL
Intelligent Mining
by RPM GLOBAL



JACOBS



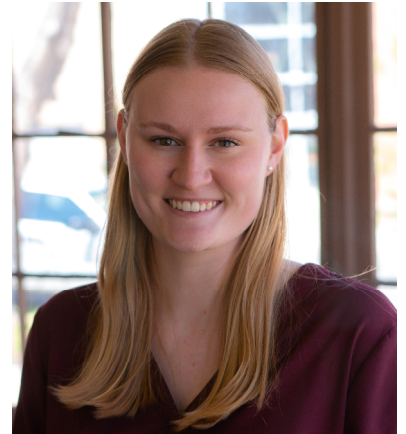
**Authentic
Drilling** Inc.

**WILSON MINING
VENTURES, INC.**



2018 SME Scholarship Recipients

Ashlyn Hohenshelt is a senior at the Colorado School of Mines and is pursuing a degree in Mining Engineering with a McBride minor in Public Affairs. She hopes to continue her education and obtain a Masters degree in Mineral and Energy Economics. Hailing from the great state of Texas, Ashlyn enjoys college football, playing volleyball, Mel Brooks, and participating in Mines traditions. She is the current Secretary of the Mines SME Student Chapter and is involved in various organizations on campus.



Hello, my name is **Kinsley Costner** and I am a senior in Mining Engineering. I grew up in the Houston area of Texas and have thoroughly enjoyed getting to explore Colorado without melting from extreme heat and humidity. I originally got into the mining industry because of the fascinating blasts and HUGEEEE equipment and it's been the best decision I ever made.

My name is **Marie Hetherington** and I'm currently a senior in Mining Engineering at Colorado School of Mines. I am the president for the SME Student Chapter at Mines. After graduation I will be moving to Elko, Nevada to work in Newmont's graduate engineer rotational program. I am originally from Williamston, Michigan and I love living in Colorado. I enjoy hiking, skiing, playing with animals, and swimming around in Clear Creek, and I am excited to explore the Rubies. I have a pet gecko named Tiny, and a pet pig named Jasper. I am extremely grateful for the scholarship, and the opportunities I have received through the Colorado Section of SME.



2018 SME Scholarship Recipients

Benjamin Teschner is a Ph.D Candidate at Colorado School of Mines. His research focuses on integrating social variables into mine valuation and planning. Prior to his PhD work, Ben spent 8 years working for industry, academia, and consulting on the relationship between mining and local communities. Ben holds a B.S. in Geological Engineering and a Masters of International Political Economy of Resources, both from Colorado School of Mines.



Josef Bourgeois grew up in northern Vermont, about a five-minute drive from the Canadian border. He is a Ph.D student in Mining and Earth Systems Engineering with industry, consulting, and research experience. His focus of study revolves around the use of high pressure water jets in mining and tunneling applications. In regards to his career, he's dedicated to changing the perception and direction of mining to one more focused on the positive impact industry can have on local communities around the world.

Muthu Vinayak is a Ph.D Student in Mining Engineering at Colorado School of Mines specializing in Mechanical Excavation. He graduated with a MS (Thesis) at CSM in January, 2018, studying disc cutters for mining applications. He is a former employee of Coal India Limited in India, where he worked for 3 years as Assistant Manager in Underground Coal Mining Operations. He also holds a B.Tech. degree in Mining Engineering from NITK, Surathkal, India.



COLORADO SECTION NEWS – NOVEMBER 2018

SME Colorado Section Membership Renewal Reminder

If you have not done so already, please take this opportunity to sign-up for or renew your SME Colorado Section membership for the 2018-2019 year.

How to join or renew:

Online: Credit card payments can be made online by visiting our website and selecting the 2018-2018 SME Colorado Section Dues link under the Our Events heading.

<http://community.smenet.org/colorado/events/>

Mail: Check payments of \$25 payable to *SME Colorado Section* mailed to Tem Tumurbat – SME Colorado Section Treasurer, 1400 16th St Suite 200, Denver, CO 80202-1471.

Why you should renew:

The section dues that we collect are vital to our ability to continue our programs. Our Section's focus is on advocating for our profession and industry here in our region. Some of the things that your Colorado Section dues help us to provide are scholarships for college students, majoring in mining disciplines; support for the Colorado State Science & Engineering Fair; provide teaching materials and perform outreach to Colorado science teachers through their State association, sponsorship for K-12 teachers participating in the *All About Mining – A Total Concept of the Mining Industry* course, and help support the Colorado Mining Museum and the National Mining Hall of Fame. So, by supporting the SME Colorado Section, you are directly supporting and advocating for your profession.

Upcoming Meetings

Section meetings are typically planned for the third Thursday of the month. Tentative dates and locations for 2016-2018 meetings are:

November 15, 2018 – Dinner at CSM Berthoud Hall
Room 243

January 17, 2019 – Lunch TBD in DTC

February 21, 2019 – Dinner TBD Downtown Denver

March 21, 2019 – Dinner TBD Golden

April 18, 2019 – Lunch or Happy Hour TBD in
Lakewood

May 16, 2019 – Awards Dinner TBD
Downtown Denver

Monthly Meeting RSVP

Costs may vary, but they are typically as follows:

Lunch Cost: \$35 per person. Students welcome at \$15 per person with reservation.

Dinner Cost: \$50 per person. Students welcome at \$20 per person with reservation

RSVP and online payments can be made through Colorado SME Eventbrite page. Links to the Eventbrite page can be found on the section page:

<http://community.smenet.org/colorado/events/>

Credit card payments can be made online using the Eventbrite page. If you plan to pay by check or cash, email Sarah Doyle to RSVP. Check or cash payment due at the meeting.

Contact Sarah Doyle at sdoyle@mymail.mines.edu, with any questions regarding the meetings.

COLORADO SECTION NEWS – NOVEMBER 2018

Volunteers for MEC events NEEDED

Volunteers for the SME Colorado Section's Minerals Education Coalition (MEC) are needed to promote our mining industry at the following outreach opportunities:

- November 3 and 10: Boy Scouts' Mining in Society merit badge workshops
- November 8-9: Colorado Science Teachers Conference
- November 13: Adams County Career Expo

Monthly MEC meetings are held at 9 AM on the first Friday of most months at the Rocky Mountain Coal Mining Institute or at locations announced in advance of the meetings.

For information on any of the above, contact Dick Beach, Chairperson, at dickbeach@alumni.mines.edu, or 303-986-6535.



EMCD meeting will be on Thursday, November 8th, 2018 at 6:00 p.m.

Mr Nick Gow of Forte Dynamics who will speak on Gold Processing and Heap Leach Recovery Modelling.

Understanding how each heap leach operational consideration affects recovery is the key to optimizing a system. Dynamic system heap leach modeling is an effective way to optimize a mining project's performance throughout its life to maximize recovery, minimize costs and optimize performance. From upfront design, through operations, to closure, it can bring value to every phase of your project. Heap leach modelling breaks down an operation into discretized sections, to refine the analysis congruent with the accuracy of available data. Each discretized zone (cube) is quantified with the metal content based on loading plans, then analyzed for extraction as a function of time based on the dynamic leaching applied. Leaching algorithms, based on modified metallurgical testing methods, are created through an examination of hydrodynamic and kinetic responses of a heap by geological alteration to identify optimal leaching patterns. Overall heap leach design can then be modified based on a number of conditions such as lift height, irrigation rate, total solution contact, remaining recoverable ounces and or even used in conjunction with a mine plan to affect the overall schedule and cut-off grade.

Bring a friend so that he or she can also enjoy great company and the presentation. The meeting dinner will be \$35.00 per person. Student attendee dinners are \$5 per person. However, we are accepting sponsorship for students if anyone would like to contribute.

Please RSVP by Tuesday, November 6th by 8 PM

To sign up we would like everyone to follow the link below and complete the sign-up form. If you have trouble with the form or would prefer not to use the form, feel free to RSVP by responding to this email or contacting Erik Stepperud (720) 331-3222 stepperude@hazenresearch.com or Solly Zitron (720) 583-2092 (land line only do not text) zzitron@comcast.net

<http://www.emcdonline.com/contact-us/events-sign-up-form>

The meeting will be at:

Holiday Inn Lakewood
7390 West Hampden
Lakewood, CO 80227



Interested in getting involved with your local SME Colorado Section?

We are currently looking to expand our Programs Committee and need volunteers to:

- **Assist with the Annual Golf Tournament**
 - Event planning
 - Coordinating with Fossil Trace Golf Club
 - Reaching out to potential tournament sponsors and players
 - Fundraising with the CSM SME Student Chapter (e.g. mulligan and merch raffles)
 - Awards
- **Assist with monthly Section programming**
 - Tour / site visit planning
 - Reaching out to potential meeting sponsors
 - Event planning for the annual Gala awards banquet



Please consider helping us out!

If you are interested, email a board member or catch us at a meeting and we will be in touch!



We want to hear from the Colorado SME Members!

The Colorado SME chapter wants to connect with our members. Find us on LinkedIn!

<https://www.linkedin.com/company/colorado-sme>

SME COLORADO SECTION

Chair: Richard Schwering
Email: rschwering@hardrock-consulting.com

Vice Chair: Heather Lammers
Email: hammers@golder.com

Treasurer: Tem Tumurbat
Email: ttumurbat@rcflp.com

Secretary: Melissa Chalona
Email: mchalona@enganalytics.com

Program Chair: Sarah Doyle
Email: sdoyle@mymail.mines.edu

Publicity Director: Kelly Donahue
Email: kdonahue@brwnald.com

Directors-at-Large: Ta Li
Email: Ta.Li@tetrattech.com

Directors-at-Large: Laura Fletcher
Email: laurafletcher435@gmail.com

Past Chair: David Bieber Email:
David.Bieber@martinmarietta.com

Visit the SME Colorado Section web site: <http://community.smenet.org/colorado/home>

This Newsletter is emailed to current and active members of the SME Colorado Section. To view or modify your subscriptions, go to: <http://community.smenet.org/colorado/sectiondirectory/profile/mysubscriptionsonprofile>. You will be prompted to log in if you have not already done so, using your SME national login credentials.

You may also update your information with SME at: <http://www.smenet.org>