



## Health and Safety Minute

### Fire Extinguisher Use

Portable fire extinguishers are not designed to fight a large or spreading fire. Instead, their primary purpose is to help you escape and to buy time for a full evacuation.

- Sound the alarm and evacuate all personnel.
- Do not use an extinguisher without proper training.
- Know the correct extinguisher for the type of fire.

### Colorado Section Chair Report

It was great to catch up with several of you during last month's online meeting where we were joined by Tara Davis, who provided an update on the 2021 SME Annual Conference & Expo planning, and Jill Nelson, who provided an update on the SME Foundation and upcoming activities. I am looking forward to the new online conference adventure next spring and encourage our members to support the SME Foundation during this challenging year.

Our next virtual meeting will be on Thursday, November 19 from 5:30-7pm and will feature a Henry Krumb Lecturer, Kwame Awuah-Offei. Henry Krumb Lecturers are selected from professionals who present outstanding technical papers at the SME Annual Conference & Expo. Kwame will be presenting on "New SEC Rules for Disclosure of Exploration Results, Mineral Resources and Mineral Reserves: What You Need to Know."

We are looking for volunteers who enjoy talking about careers in the mineral industry to assist the Minerals Education Coalition (MEC) during the online Adams County Commissioner's Career Expo. MEC will host a virtual booth where interested students can talk with past, present, and soon-to-be members of the minerals industry. The virtual career expo will feature two-hour sessions on November 17 and 18 from 9-11am and 1-3pm each day. Please contact Dick Beach (dickbeach@alumni.mines.edu) if you are interested in this opportunity to support MEC's outreach.

Thank you for the opportunity to serve as Chair of the Colorado Section. As always, please do not hesitate to reach out (hlammers@golder.com) if you have any questions, comments, or concerns. We are actively seeking input from our members regarding upcoming programming opportunities and welcome any feedback to help steer us along! I hope to see you online at our November meeting.

Stay safe and healthy,  
Heather Lammers

### November Colorado Section Meeting

Please join us online from 5:30pm to 7:00pm on Thursday, November 19 for a meeting of the SME Colorado Section. Dr. Kwame Awuah-Offei, as part of the SME Henry Krumb Lecture series, will be presenting on "New SEC Rules for Disclosure of Exploration Results, Mineral Resources and Mineral Reserves: What You Need to Know."

Dr. Awuah-Offei is an associate professor of mining engineering and the interim director of the mining engineering program at Missouri University of Science & Technology. He served as a mining engineering academic fellow at the Securities and Exchange Commission and he holds a PhD in mining engineering from Missouri University of Science & Technology (formerly University of Missouri-Rolla).

There is no cost to attend this meeting. Join Zoom Meeting:  
<https://umsystem.zoom.us/j/97614822906?pwd=d2xRMHZidm9RQzIPTmp4b0ZJcmRXUT09>  
Meeting ID: 976 1482 2906 Passcode: 826309

## Colorado Section Membership Renewal Reminder

If you have not done so already, please take this opportunity to sign-up for or renew your SME Colorado Section membership for the 2020 - 2021 year.

### How to join or renew:

**Online:** Credit card payments can be made online by visiting our website and selecting the 2020 - 2021 SME Colorado Section Dues link under the Our Events heading.

<http://community.smenet.org/colorado/events/>

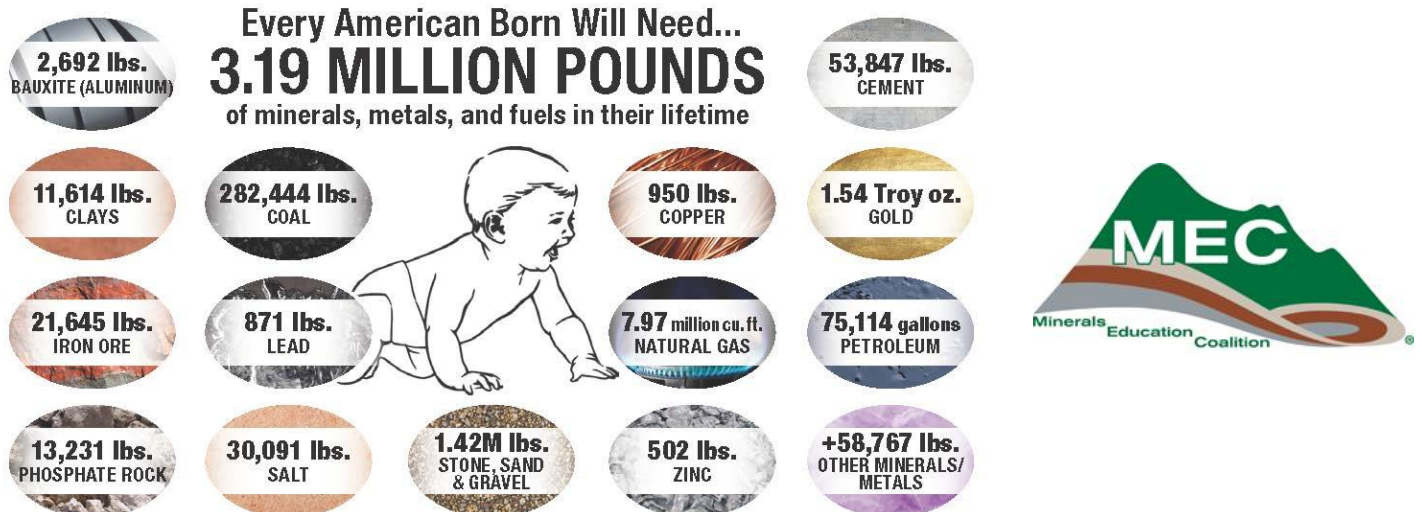
**Mail:** Check payments of \$25 payable to *SME Colorado Section* mailed to:

Phil Martin – SME Colorado Section Treasurer,  
1400 16<sup>th</sup> St Suite 200  
Denver, CO 80202-1471.

### Why you should renew:

The section dues that we collect are vital to our ability to continue our programs. Our Section's focus is on advocating for our profession and industry here in our region. Some of the things that your Colorado Section dues help us to provide are scholarships for college students, majoring in mining disciplines; support for the Colorado State Science & Engineering Fair; provide teaching materials and perform outreach to Colorado science teachers through their State association, sponsorship for K-12 teachers participating in the *All About Mining – A Total Concept of the Mining Industry* course, and help support the Colorado Mining Museum and the National Mining Hall of Fame. So, by supporting the SME Colorado Section, you are directly supporting and advocating for your profession.

### 2020 MEC Mineral Baby



## Colorado Mining Exhibit Foundation Update

It has been a tough year, but the Colorado Mining Exhibit Foundation (CMEF) helped pay for the 20 ft x 12 ft “Economic Geology of the Front Range” mural on Dinosaur Ridge’s new Discovery Center just west of Lakewood. The venue hosts more than 200,000 visitors/year and most are families, thus (hopefully) voters. The Foundation also sponsors the gold panning trough, fossil hunt activities, the “Women In Science” exhibit and STEM workshops.

Using SME’s MEC public education material, the Foundation updated the ‘Teacher Corner’ exhibits at NMHF&M in Leadville, WMMI in Colorado Springs and CSM’s Geology Museum (including promotional material for the new CSM/CMA Web-based summer course for teachers, and the Boy Scout merit badge). The theme of all this work: *The Importance of Mining and Minerals to a Strong America*.

Additional work involved the indoor and outdoor (Engine #60) “Railroads & Mining: Building the West” displays, plus “Coal / MLR” and “Economic Minerals” exhibits for the Idaho Springs Historical Society (50,000 visitors/year). Smaller displays highlighted high quality western coal in blacksmithing, plus modern water quality technology.

The “Mining In America” gallery and the “Gold” and “Coal” rooms were expanded at NMHF&M with new wiring (in the 115 year old building) and lighting, plus a new large outdoor sign to attract downtown Leadville visitors was built. Interactive electronics (a large touch screen) was added to the oral history project.

WMMI expanded their “Coal/Reclamation” exhibit, and additional displays were set up on “Economic Geology” and “Sustainability”. The new “Mineral Maniacs” book was handed out (as a thank you) to teachers who brought classes to the museum for a tour.

The Foundation added more graphics to the student education area at the CSM Geology Museum and updated the Teacher Kits with DVD’s of old VHS education material such as “Common Ground”. The museum checks out hundreds of kits to teachers who visit with their earth science classes. The teachers are given a nice book bag as a “thank you” gift. Public education graphics were set up at the Edgar Mine.

For more information regarding the CMEF contact Guy Johnson, GPJ222@aol.com

## Upcoming Conferences and Events



**TAILINGS AND  
MINE WASTE 2020**

November 15-18, 2020 | Virtual Event



**MINE XCHANGE**  
2021 SME Annual Conference & EXPO  
CMA 123rd NATIONAL WESTERN MINING CONFERENCE

March 1-5, 2021 Virtual



**Colorado Section Member Spotlight****Name:** Guy Johnson**Profession:** Mining engineer turned consultant and exhibit coordinator for the Colorado Mining Exhibit Foundation.**Education:** B.S. and M.S. in mining engineering, M.S. in mineral economics all from the University of Minnesota**Years in Industry:** 50+ beginning at age 16 in northern Minnesota**What inspired you to join the mining industry and what do you enjoy most about your career?**

I grew up in a mining town where the engineers had nice houses and drove nice cars! I began work at age 16 at a taconite mine that gave me a scholarship to go to the University of Minnesota. I have since had opportunities to work in surface and underground mines all over the world for a variety of commodities and have held research positions in technology and safety development. While developing an automated fire protection system for haul trucks, shovels, loaders, and other large equipment, I met an operator who used the automated fire system I was developing and was able to climb out of a vehicle that had caught fire. I was deeply moved at the direct connection to saving a miner's life.

**What are some noticeable changes you have seen over time in the mining industry?**

Automation and instrumentation. When I began my career, the industry was primarily heavy labor with significant risks to human health and safety. Over time, injury and deaths have decreased while productivity has increased through the implementation of automation and monitoring instrumentation for safety, productivity, and the environment. Future advancements are still needed in the development of rugged instrumentation that can take the beating of the mining operations. The instrumentation and monitoring systems need to work longer than 9 months to add value to the mining operation. The application of robotics in the industry may also limit the miner's exposure to dangerous situations in the future.

**What value do you place on involvement in professional organizations?**

Volunteerism is needed throughout the mining industry. Family, work, and other commitments can leave little time to be involved, though everyone is busy. Make time to pick and choose organizations where you can give back in a way that has high impact and relevance to you. Being connected through an organization is a great way to meet people and build your personal and professional network.

## SME Colorado Section

**Chair: Heather Lammers**  
*hlammers@golder.com*

**Vice Chair: Melissa Chalona**  
*mchalona@enganalytics.com*

**Treasurer: Phil Martin**  
*pmartin@rcflp.com*

**Secretary: Amanda Davis**  
*amanda.davis@maptek.com*

**Program Chair: James R. des Cognets**  
*jdescognets@rcflp.com*

**Golf Tournament: Alex Holtzapple**  
*alex@metsim.com*

**Publicity Director: Kelly Donahue Email**  
*kdonahue@brwncald.com*

**Director-at-Large: Eric Poeck**  
*epoeck@hotmail.com*

**Director-at-Large: Jon Pianetti**  
*jon.pianetti@gmail.com*

**Past Chair: Richard Schwering**  
*rschwering@hardrock-consulting.com*

